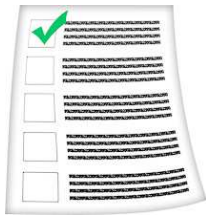




We are asking people what they think about our plan to stop paying a subsidy for meals in the community.



We (the Council) are giving people the chance to share their views.



The information is not in Easy Read so you may want to ask for help to take part in the survey or send us your comments. You could ask:

- A carer
- A support worker
- A friend
- A member of your family



You can find the survey here:
www.eastsussex.gov.uk/mealsubsidy



If you do not have anyone to help you, please call on **01273 481 242** between 9am-12pm from Mon to Thurs and we will try to help.



The consultation will close on 6 August.