


IMPROVED ACCESS TO CUCKOO TRAIL - SECTION 1

SHEET 1 OF 4

KEY

- CARRIAGEWAY
- FOOTWAY
- GRASS VERGE
- EXISTING CUCKOO TRAIL
- ON-ROAD CYCLE MARKING



PROPOSED CYCLE ROAD MARKINGS

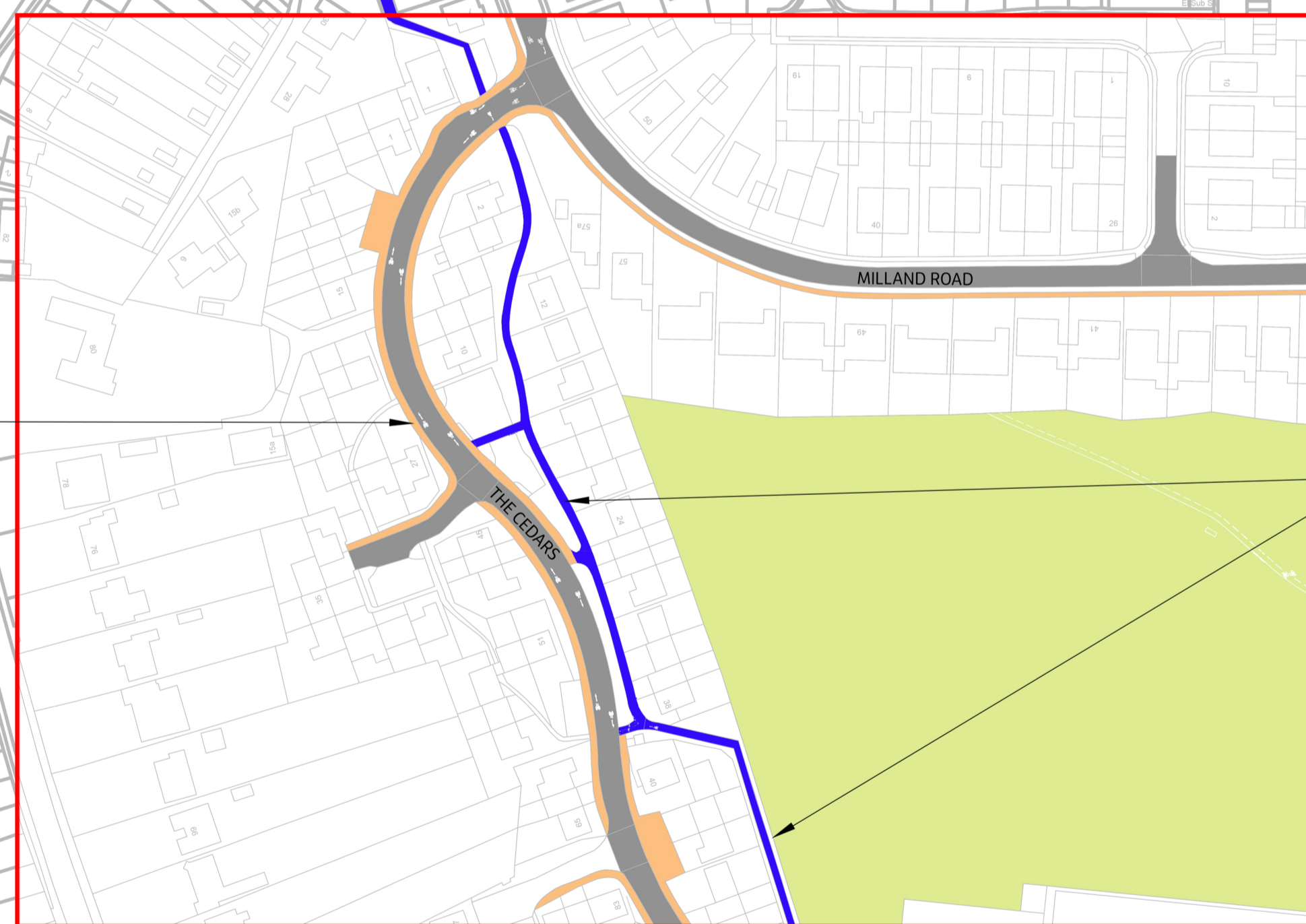
IMPROVED ACCESS FROM HAWKS ROAD ONTO THE CUCKOO TRAIL



SHEET 2 OF 4

PROPOSED ON-ROAD CYCLE ROUTE MARKINGS ON THE CEDARS FOR ROUTING CYCLISTS USING THE CUCKOO TRAIL

EXISTING CUCKOO TRAIL



BATTLE ROAD


HAILSHAM

IMPROVED ACCESS TO CUCKOO TRAIL - SECTION 2

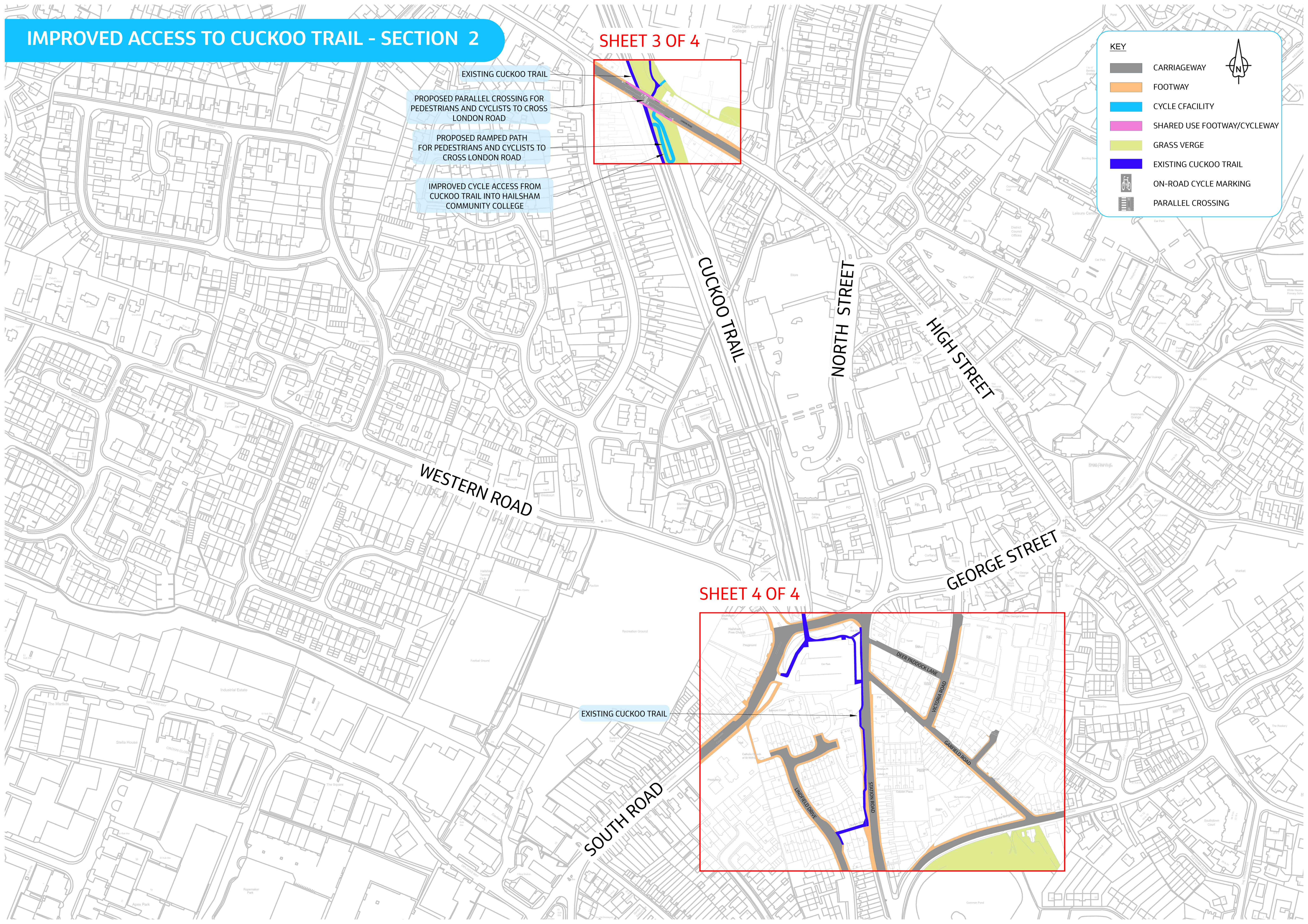
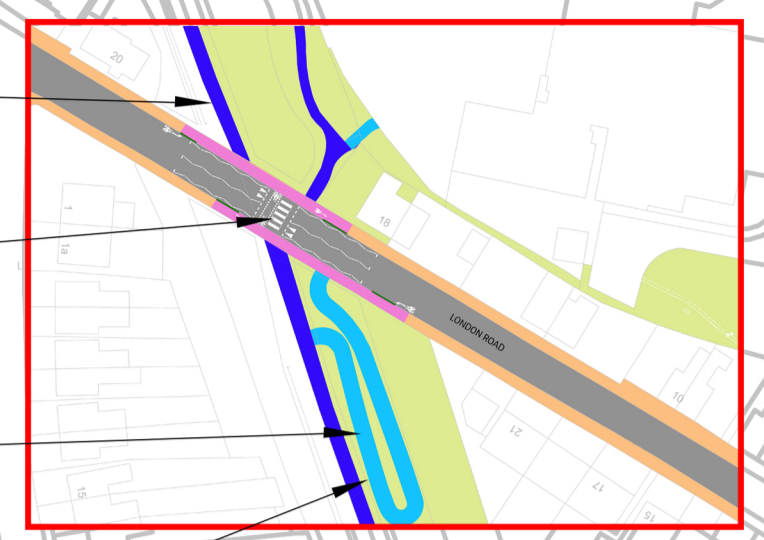
SHEET 3 OF 4

KEY

- CARRIAGEWAY
- FOOTWAY
- CYCLE CFACILITY
- SHARED USE FOOTWAY/CYCLEWAY
- GRASS VERGE
- EXISTING CUCKOO TRAIL
- ON-ROAD CYCLE MARKING
- PARALLEL CROSSING



- EXISTING CUCKOO TRAIL
- PROPOSED PARALLEL CROSSING FOR PEDESTRIANS AND CYCLISTS TO CROSS LONDON ROAD
- PROPOSED RAMPED PATH FOR PEDESTRIANS AND CYCLISTS TO CROSS LONDON ROAD
- IMPROVED CYCLE ACCESS FROM CUCKOO TRAIL INTO HAILSHAM COMMUNITY COLLEGE



SHEET 4 OF 4

EXISTING CUCKOO TRAIL

